

# Welcome to the Urban Roadmaps Scenario Building Tool Training Webinar

**Webinar Host: Guy Hitchcock**



# Webinar Demonstration Agenda

- Illustrate the objectives and structure of the tool
- Highlight the policies and outputs available
- Demonstrate the City Wizard and Tool live
- Review some pre-designed examples of policy sets
- Indicate the required steps in developing a roadmap
- Signpost further support and information repositories
- Question and Answer session



## Key Objectives of the Online Tool

- The ability to screen and assess transport policies and measures
- Provide quantitative outputs covering a range of metrics
- Adaptable to different city circumstances
- Very easy to use – no experience in transport modelling required
- No specific software required
- Covers all relevant transportation/travel modes



# Link to the Sustainable Urban Mobility Plan (SUMP) process

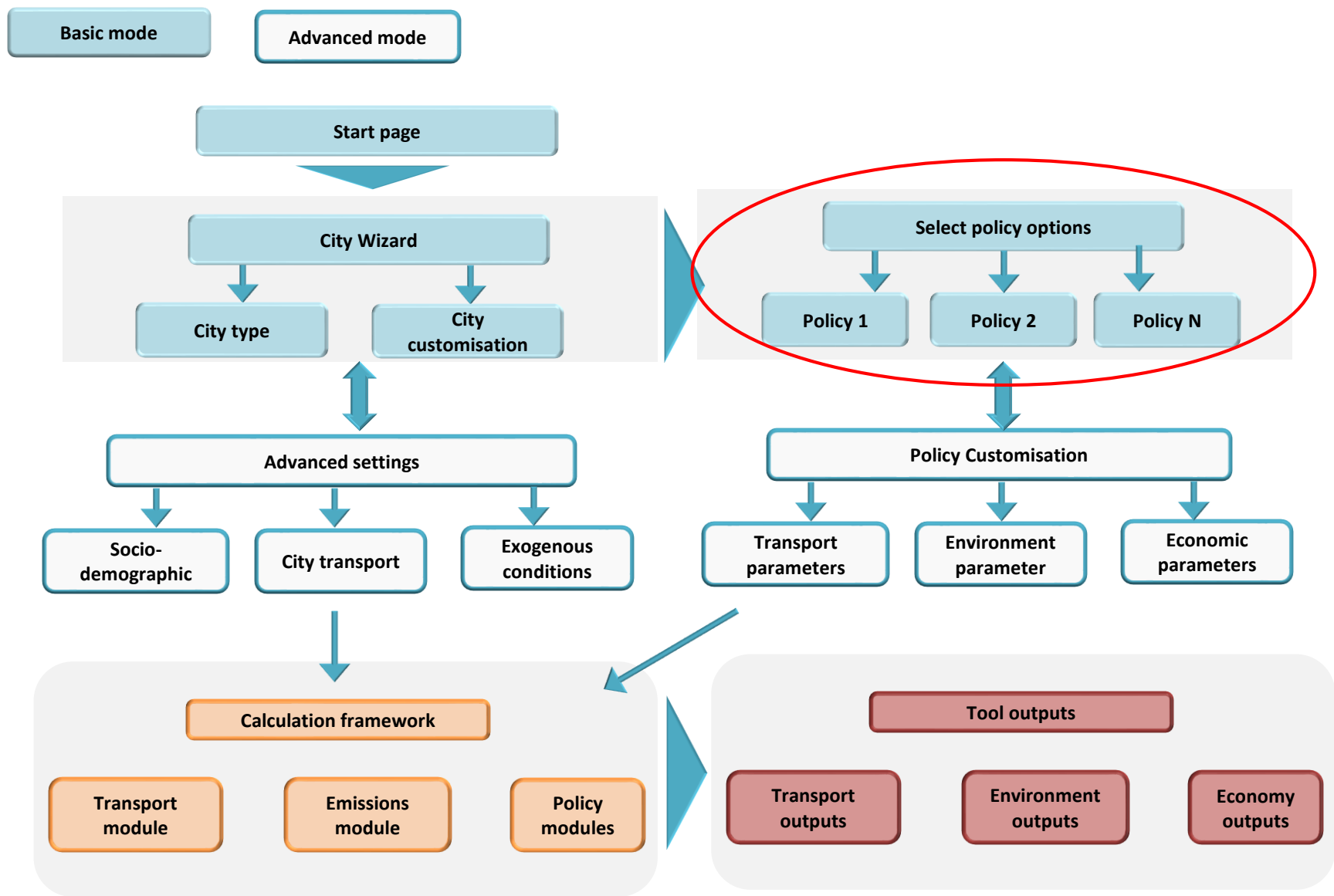


Facilitates assessment and discussion of current issues

Quantification supports development of priorities and targets

Allows scoping and development of policy packages

# Outline structure of the tool

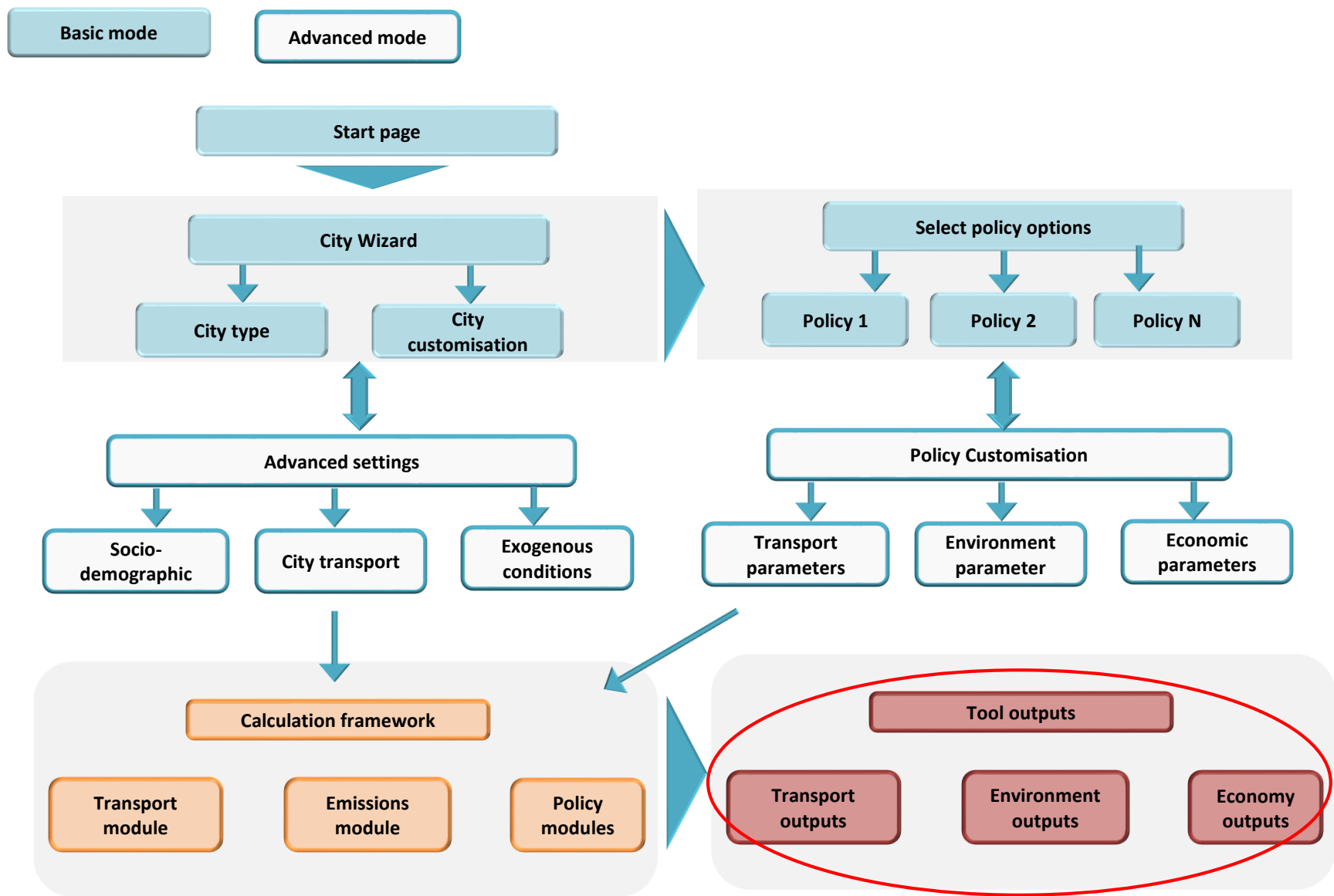


# The Policy Toolbox

Policy Type	Measure
Demand Management	<ul style="list-style-type: none"> <li>• Sustainable travel information and promotion</li> <li>• Bike Sharing Scheme</li> <li>• Car sharing (Car Clubs)</li> <li>• Delivery and Servicing Plans</li> <li>• Land-use planning - density and transport infrastructure</li> </ul>
Green Fleets	<ul style="list-style-type: none"> <li>• Green energy refuelling infrastructures</li> <li>• Green public fleets</li> </ul>
Infrastructure Investments	<ul style="list-style-type: none"> <li>• Bus, trolley and tram network and facilities</li> <li>• Walking and cycling networks and facilities</li> <li>• Park and ride</li> <li>• Metro network and facilities</li> <li>• Urban Delivery Centres and city logistics facilities</li> </ul>
Pricing and financial incentives	<ul style="list-style-type: none"> <li>• Congestion and pollution charging</li> <li>• Parking pricing</li> <li>• Public Transport integrated ticketing and tariff schemes</li> </ul>
Traffic management and control	<ul style="list-style-type: none"> <li>• Legal and regulatory framework of urban freight transport</li> <li>• Prioritising Public Transport</li> <li>• Access regulation and road and parking space reallocation</li> <li>• Traffic calming measures</li> </ul>



# Outline structure of the tool



## Transportation outputs

- Cars per thousand inhabitants
- Mode split
- Average car speed in peak / off-peak hours
- Average bus speed in peak / off-peak hours
- Average distance per trip
- Share of freight traffic in peak / off-peak hours
- Penetration of alternatively fuelled vehicles
- Vehicle km travelled

## Environment / safety outputs

- CO<sub>2</sub> emissions
- PM emissions
- CO emissions
- NOx emissions
- VOC emissions
- Energy consumption by fuel type
- Energy consumption by mode
- Number of accidents
- Fatalities per 100,000 inhabitants

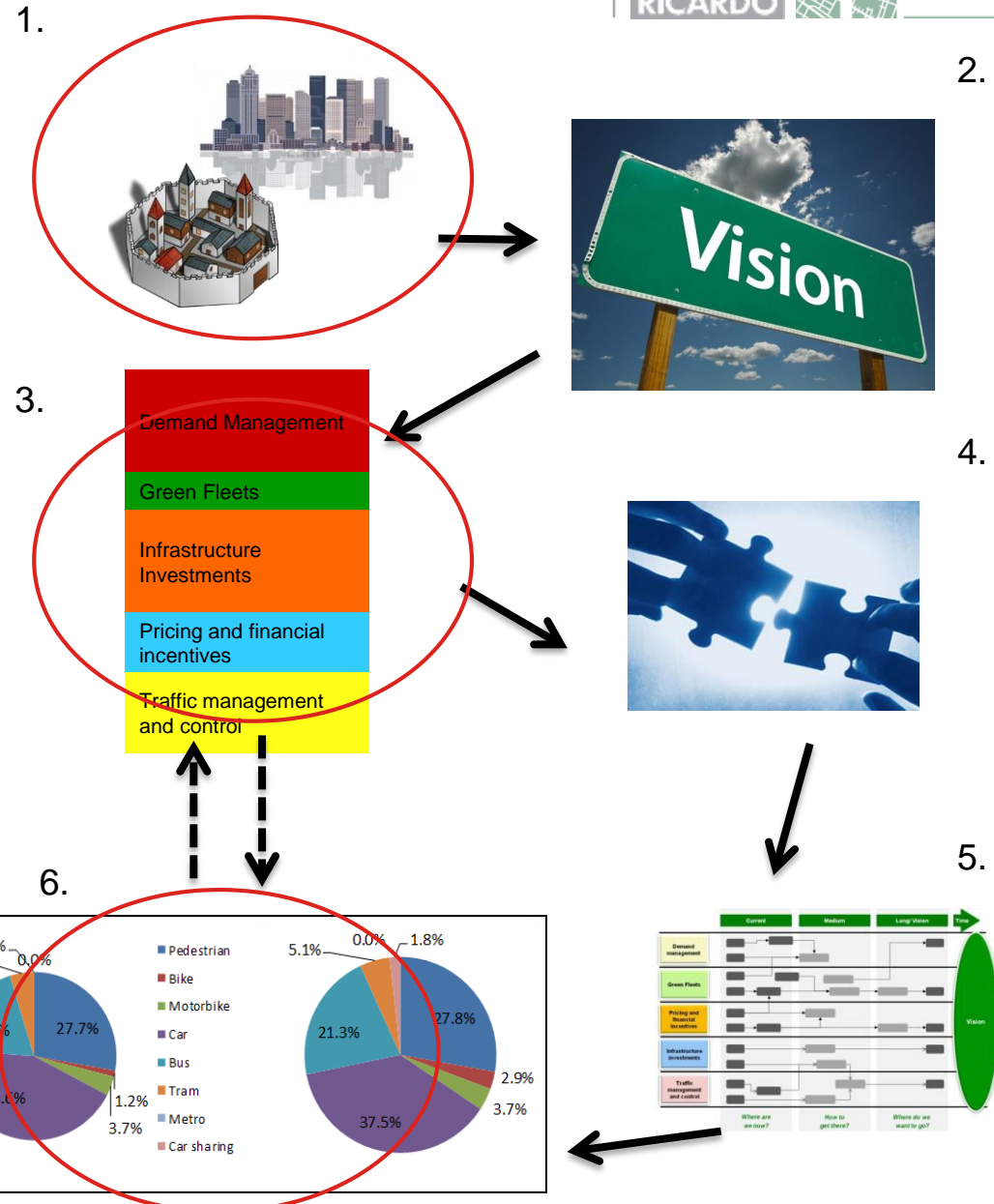
## Economic outputs

- Transport expenditure per individual
- Total transport expenditure/revenue by the public administration
- External or Social costs of transport

Launch Roadmaps Tool

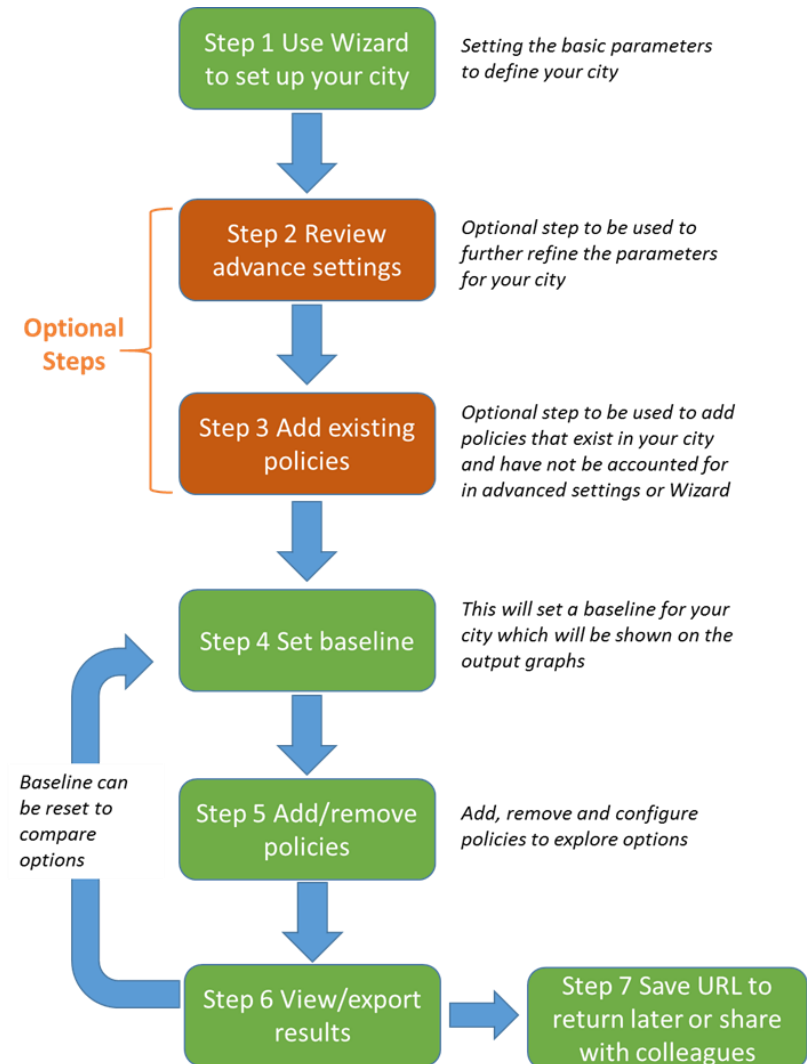
# Developing a roadmap

1. Analyse the current situation
2. Setting the vision (objectives)
3. Identify policy measures
4. Grouping of policy measures in consistent strategies
5. Specify the pathway and timelines to proceed towards scenarios' goals
6. Assess the outcomes



# Help and further information

- Information icons (i) are available throughout the tool
- The Homepage of the website contains:
  - Quick start user guides (English, Italian, German, Polish, French, Spanish)
  - Recordings of these webinars (English, Italian, German, Polish, French, Spanish)
  - A full user guide (English only)
  - Roadmaps guide (English only)
- Links to other EC tools (in the about page)
- Contact form



The tool can be accessed at

<http://urban-transport-roadmaps.eu/>

Questions and discussion?

Guy Hitchcock  
Knowledge Leader  
Ricardo Energy and Environment

[Guy.Hitchcock@ricardo.com](mailto:Guy.Hitchcock@ricardo.com)